

The 0-6-0 Locomotive has had improvements over the past few months, the addition of double pickups has improved slow running over points and Diamond Crossings.

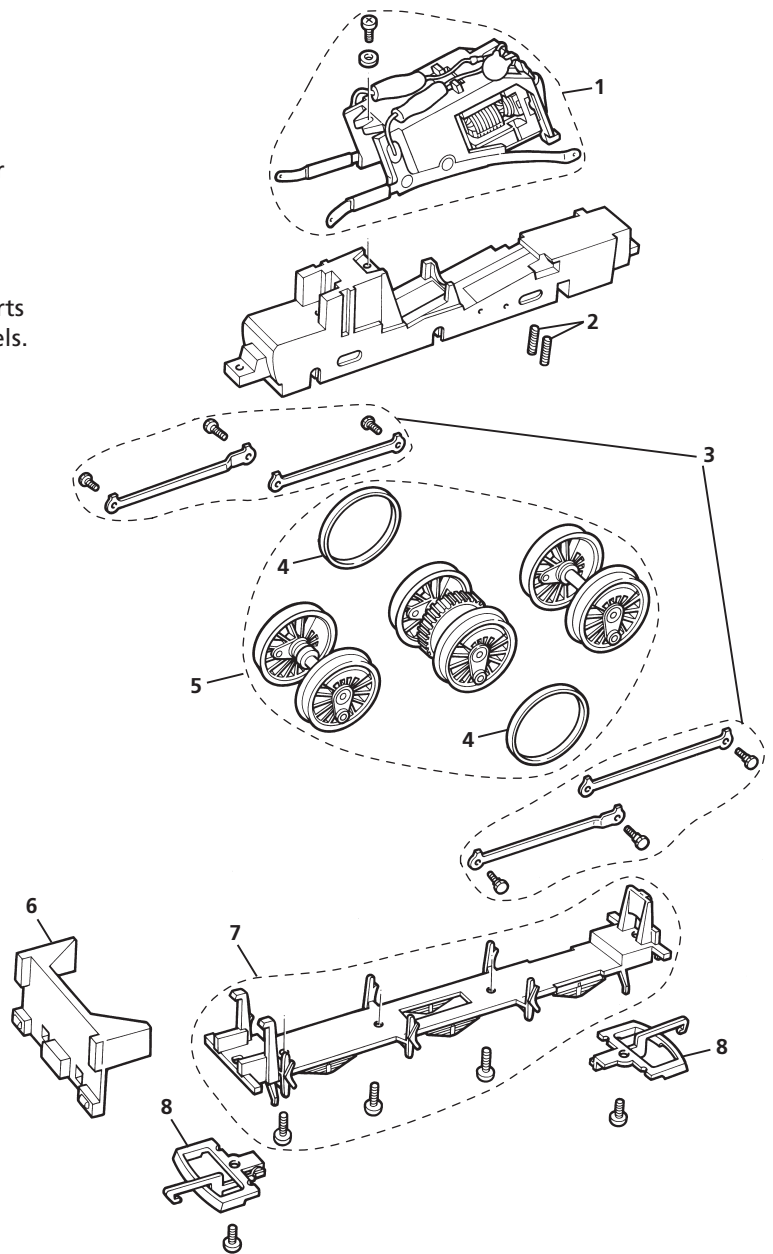
Due to the improvements, the majority of the parts are now not interchangeable with previous models.

PLEASE NOTE

The 0-6-0 Locomotive chassis is designed to provide a strong hauling locomotive with good electrical pickup and low weight.

A balance has to be achieved between the strength of the coil springs holding the rear driving axle down and the body weights which compress the springs and keep the traction-tyred centre wheels in contact with the track. Therefore, the chassis cannot be performance tested without the body in place.

The spring pressure may be reduced by snipping off one coil from each spring. Pressure can be increased by inserting discs of paper or cardboard, 2mm. in diameter, into the spring location holes before refitting the springs.



LIST OF SPARES

Item No.	Description	Pack	R351	R382	R9067, R9066, R9050
1	Motor & Retainer Assembly	1	X8809	X8809	X8809
2	Compression Springs	10	X8114	X8114	X8114
3	Coupling Rods & Screws Bright Nickel	set	X8878	X8878	N/A
	Coupling Rods & Screws Blacked Nickel silver	set	X8878B	X8878B	X9165
4	Traction tyres	10	X8101	X8101	X8101
5	Wheel/Axle set Bright Nickel	set	X8873	X8874	N/A
	Wheel/Axle set Blacked Nickel Silver	set	X8873B	X8874B	X8871
6	Body Mounting Clip	1	N/A	N/A	L5717
7	Chassis Bottom & Screws	1	X8019SK	X8019SK	X8019SK
8	Couplings	10	X8031	X8031	X8031
not illustrated	Motor & Worm Assembly	1	X8202	X8202	X8202
not illustrated	Worm & Worm Wheel	1+1	X8199	X8199	X8199

Note: May 2003 – Wheels and coupling rods changed to Black Nickel on all Thomas range